



FIRE SAFETY

2023 REGULATION UPDATES

New Fire Safety (England) Regulations came into force in 2023. This document will explain the background, what fire safety professionals need to be aware of, and of the potential challenges ahead.

INTRODUCTION

The Government continues to implement new legislation following the Hackett review and Grenfell Tower Inquiry. This has resulted in amendments to the existing Regulatory Reform (Fire Safety) Order 2005 (Fire Safety Order) which governs day to day fire safety. The Fire Safety Act 2021 (FSA 2021) came into force in England in May 2022 and is now fully operational in both England and Wales.

Amidst the publicity associated with the passage into law of the Building Safety Act and the significant challenges it imposes for all operating in the built environment sector, it is important to note that there are also very challenging new fire safety regulations – the Fire Safety (England) Regulations 2022 – which came into force on 23 January 2023, plus further regulations made under the Building Safety Act which came fully into force on 1 October 2023.

The Fire Safety Regulations apply to multi-occupied residential buildings in England only and impose rules for;

- non high-rise buildings – e.g. fire safety instructions must be provided to residents
- buildings over 11 metres – e.g. annual checks of fire doors must be carried out
- buildings over 18 metres – e.g. floor plans must now be provided to Fire and Rescue Services

FIRE SAFETY ACT FSA 2021

If you own, manage or operate from a building you are likely to be a Responsible Person. If so, you should carefully consider whether the obligations under these Regulations apply to you.

Where you rely on third-party managing agents they will need to be aware of the duties imposed by the Fire Safety Regulations and you must ensure they are obliged, to and are in a position to, action the new requirements, noting that the Regulations are criminally enforced and that the duties they create are non-delegable, meaning you may still face prosecution if things go wrong.

Industry opinion has voiced its concern regarding the capacity of the building safety industry to be able to provide sufficient resource to implement the new checks and reviews required under the Fire Safety Regulations and other recent changes to fire safety legislation. Thought should be given to the availability and competency of personnel when making plans to action requirements of the Fire Safety Regulations.

Given the current and forthcoming requirements of the Building Safety Act (which includes the management of “building safety” risks, including fire safety) and in addition to the existing requirements of fire safety law, consideration should also be given to ensuring competence for existing and future requirements. When reviewing internal or external expertise, consideration should be given to whether the individual or organisation has the necessary technical expertise to evaluate and communicate the relevant control measures, and particularly to determine technical compliance and to devise appropriate controls. In our view, attention will be paid to whether individuals carrying out risk assessments and identifying control measures have recognised industry accreditations.

Examples such as membership of accredited schemes such as NAFRAR or FRACS, and compliance with the latest technical guidance and British Standards, such as PAS 9980, should all be considered when looking for evidence of competence. Competence should be monitored as standards evolve to ensure those engaged remain competent, although if (as appears to be expected) there is a shortage of accredited competent individuals flexibility may have to be employed in assessing competence in the short term – for example by reference to experience rather than formal accreditations.

Owners and duty holders should also be aware of the potential costs following on from the Fire Safety Regulations. For example, if during a check of fire-fighting equipment, it is found to fall short of contemporary fire safety standards, it is likely the Responsible Person will be advised to replace the equipment. Careful consideration should be given to who bears relevant responsibilities for costs under the relevant leases.

PRACTICAL CONSIDERATIONS

“When reviewing internal or external expertise consideration should be given to whether the individual or organisation has the necessary technical expertise to evaluate and communicate the relevant control measures, and particularly to determine technical compliance and to devise controls. In our view, attention will be increasingly paid to whether individuals carrying out risk assessments and identifying control measures have recognised industry accreditations.”

PLAN OF ACTION

To help the Responsible Person meet some of those New Duties outlined above we are able to supply you with a range of signs and products that are designed to provide solutions to some of those requirements mentioned.

Fire Action Notices are perhaps the easiest way to convey instructions on what to do if you discover a fire – we have a wide range of options for various scenarios (e.g. does the building have a lift, is the fire service called automatically or does someone need to phone them manually, are there likely to be non-English speaking residents in the building etc). Similarly we offer a wide range of fire door signs to cover multiple scenarios to ensure the correct instructions are provided at each fire door.

***The above information and guidance was supplied by IFSEC Global and by the fire safety team at law firm, Addleshaw Goddard - [click here for the full article](#).**

DOES IT APPLY TO YOUR BUILDING?

The new fire safety regulations apply to existing multi-occupied buildings with two or more sets of domestic premises, with various duties applying to buildings of differing heights.

While the legislation will also apply to new buildings when completed, it should also be noted that the Government has updated the Building Regulation's guidance, Approved Document B to meet the recommendations of the Grenfell Tower Inquiry. This means such buildings face enhanced obligations, and that the Building Safety Act introduces a much tougher building regulations process which will apply in late 2023 to multi-occupied residential buildings that are 18m, or of seven storeys or more.

BUILDING SAFETY ACT 2022: SECTION 156

From 1 October 2023, new fire safety legislation came into effect which imposes new duties on businesses and building owners. The Fire Safety Order is the primary fire safety legislation in England and Wales and it applies to all non-domestic premises as well as the communal parts of residential buildings. Changes to this legislation have been introduced through the Building Safety Act 2022, and represent the next phase of the Government's fire safety reform programme.

The main changes introduced by the legislation are:

The previous requirement to have a written fire risk assessment only applied in certain circumstances (e.g. where the Responsible Person employs five or more persons). This will no longer be the case. If you are the responsible person, then you will need to record both your fire risk assessment and fire safety arrangement in full, regardless of the size or purpose of the business or premises.

In premises where there is more than one Responsible Person (e.g. in multi-occupied premises or buildings where the occupier and building owner are different entities), there are increased requirements for cooperation and coordination between Responsible Persons.

In residential buildings with two or more domestic premises (e.g. blocks of flats) then the responsible owner must provide residents with information on the risks from fire within their building and the fire safety measures provided to keep them safe. This requirement expands upon legislation introduced in January 2023 that required Responsible Persons to provide residents with information on emergency procedures and the importance of fire doors.

For further information on all the changes to legislation and what you need to do to comply, the government has published guidance which is [available here](#).

NEW DUTIES FOR THE RESPONSIBLE PERSON

The provision of information to residents may be achievable by using appropriate signage and products found within this latest brochure.

New duties for multi-occupied residential buildings with two or more sets of domestic premises, the Responsible Person will be required to provide:

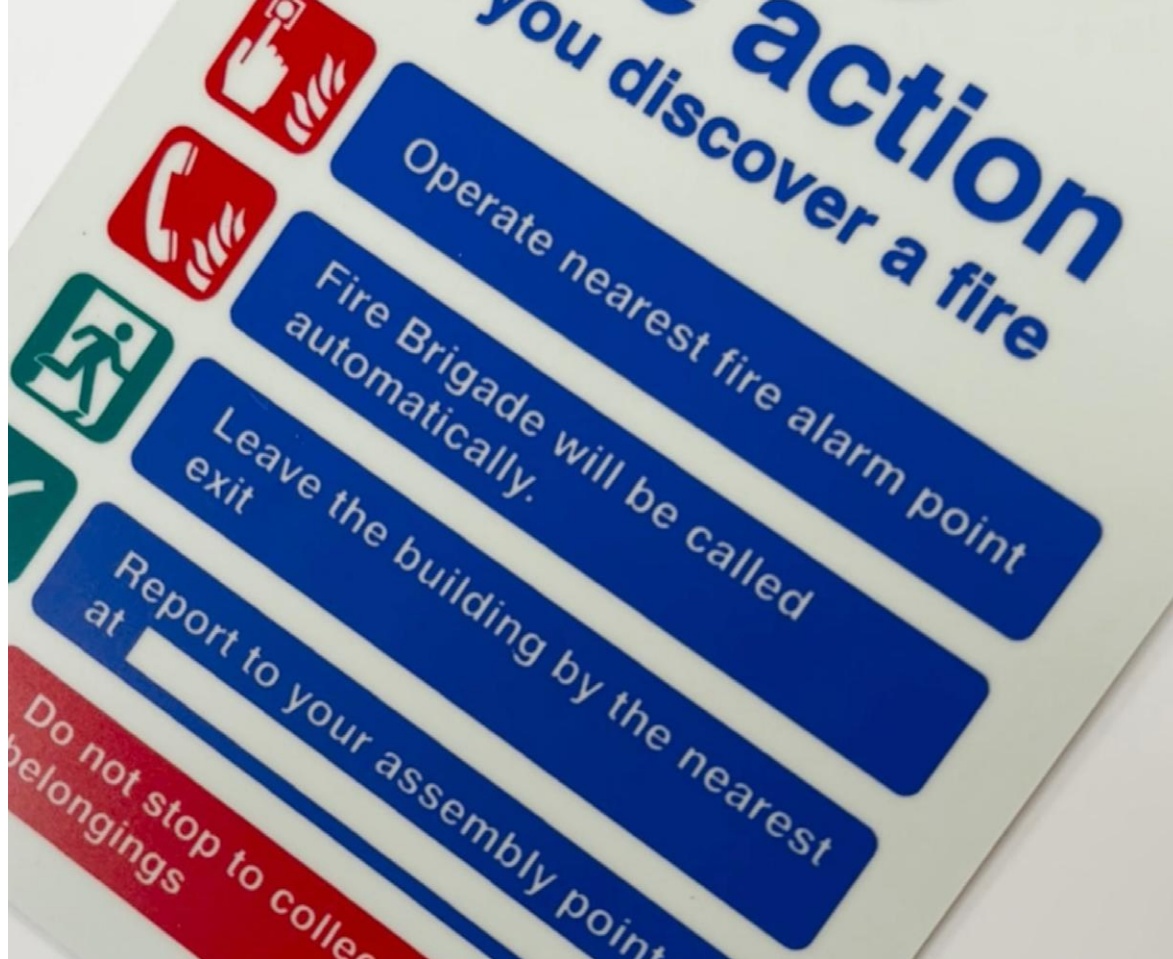
- | | Pages: |
|---|--------|
| • Relevant fire safety instructions to residents, including instructions on how to report a fire and what a resident must do once a fire has occurred based on the evacuation strategy for the building _____ | 5 - 7 |
| • Residents with information relating to the importance of fire doors in fire safety _____ | 9 - 11 |

New duties for residential buildings above 11m, the Responsible Person will be required to:

- | | |
|---|---------------|
| • Provide fire safety instructions and fire door information _____ | 5 - 7, 9 - 11 |
| • Undertake annual checks of flat entrance doors and quarterly checks of all fire doors in the common parts _____ | 10 |

New duties for residential buildings of at least 18m or of seven storeys or more, the Responsible Person will be required to:

- | | |
|---|---------------|
| • Provide fire safety instructions, fire door information, and undertake fire door checks _____ | 5 - 7, 9 - 11 |
| • Install and maintain a secure information box in the building, which must contain the name and contact details of the Responsible Person and hard copies of the relevant floor plans _____ | 11, 14 - 15 |
| • Provide up to date electronic floor plans for the local Fire & Rescue Service and store a copy in the Information Box _____ | 11, 14 - 15 |
| • Send information regarding the design and materials in the external wall to the Local Fire and Rescue, together with details of any risks and mitigating steps taken _____ | 11 |
| • Undertake monthly checks on fire-fighting lifts, evacuation lifts and check the functionality of other key pieces of fire-fighting equipment. Defects will need to be reported to the local Fire and Rescue Service as soon as possible if the fault cannot be fixed within 24 hours. Records of the outcome of checks will need to be available to residents _____ | 11 |
| • Install signage that is visible in low light or smoky conditions. The signage in stairwells must identify the relevant flat and floor numbers _____ | 12 - 13 |



Ultra Bright

*Glows brighter
for longer*

SEE PAGE 17 FOR MORE INFORMATION

FIRE ACTION SIGNS

Fire action signs are necessary for displaying key information such as evacuation procedures, highlighting hazardous areas and advising the actions to be taken in case of a fire - actions such as phoning the fire brigade, not using lifts and where the fire assembly point is located.

Houses of multiple occupancy (HMO) have strict regulations for fire safety and must always have fire action plans in place. Additionally, legislation requires that all staff & visitors know the fire action procedures for residential and work premises.

FIRE ACTION SIGNS

Automatic Contact | Lift in Building | Input Assembly Point Details

1 1428

2 1428

8 1428

3 1428 **Ultra Bright**

4 1428

Automatic Contact | Lift in Building

1 1408

2 1408

8 1408

3 1408 **Ultra Bright**

4 1408

Anodised Aluminium
150 x 200mm
5 9528

Brass
150 x 200mm
5 9529

Automatic Contact | Input Assembly Point Details

1 1429

2 1429

7 1429

8 1429

3 1429 **Ultra Bright**

4 1429

Contact Fire Service | Lift in Building | Input Assembly Point Details

1 1419

2 1419

8 1419

3 1419 **Ultra Bright**

4 1419

Anodised Aluminium
150 x 200mm
5 9538

Brass
150 x 200mm
5 9539

Contact Fire Service | Input Assembly Point Details

1 1405

2 1405

7 1405

8 1405

3 1405 **Ultra Bright**

4 1405

Contact Fire Service | Input Assembly Point Details

1 1420

2 1420

8 1420

3 1420 **Ultra Bright**

4 1420

148 x 210mm
Rigid Plastic
5 8318
Self Adhesive Vinyl
5 8319

Ultra Bright

Photoluminescent signs are charged by light which allow them to glow in the dark if there is a sudden loss of light due to a power outage or thick smoke from a fire is obstructing vision.

Ensuring that signage is clearly visible in blackout conditions can prove the difference between life and death during an emergency evacuation, helping guide people to exits and to essential equipment.

The strength and quality of photoluminescence can vary greatly between manufacturers and for this reason we have introduced our UltraBright brand to give assurance that all our photoluminescent signage exceeds PSPA (The Photoluminescent Safety Products Association) Class C ratings, making it one of the best products in the UK market.

See page 17 for material specifications.

HMO: Communal Notice

1 1415

2 1415

Contact Fire Service | Input Escape Route & Assembly Point Details

1 1423

2 1423

8 1423

3 1423 **Ultra Bright**

4 1423

Adapt-a-Sign
215 x 310mm
5 1423

Contact Fire Service | Lift in Building | Input Escape Route & Assembly Point Details

1 1432

2 1432

8 1432

3 1432 **Ultra Bright**

4 1432

Adapt-a-Sign
215 x 310mm
5 1432

MULTI-LINGUAL FIRE ACTION SIGNS

Multi-lingual fire action signs highlight important information in different languages, covering safety, emergency exits, assembly points and what to do in the event of an emergency. This information is vitally important to the safety and understanding for all inside a building.

English, French, German

Fire action if you discover a fire

- Operate nearest fire alarm point.
- Fire Brigade will be called automatically.
- Leave the building by the nearest exit.
- Report to your assembly point.
- Do not stop to collect personal belongings.
- Do not use lift.

1 1437

2 1437

English, Polish

Fire action if you discover a fire

- Operate nearest fire alarm point.
- Fire Brigade will be called automatically.
- Leave the building by the nearest exit.
- Report to your assembly point.
- Do not stop to collect personal belongings.
- Do not use lift.

1 1440

3 1440

English, Polish

Fire Action

- Operate nearest fire alarm.
- Wyjdź z budynku najbliższym wyjściem
- Zgłoś się do Twojego punktu zbiorczego przy

1 1441

2 1441

English, French, German

Fire action if you discover a fire

- Operate nearest fire alarm point.
- Call the Fire Brigade by telephoning 999
- Leave the building by the nearest exit.
- Report to your assembly point.
- Do not stop to collect personal belongings.
- Do not use lift.

1 1436

3 1436

English, French, German

Fire action if you discover a fire

- Operate nearest fire alarm point.
- Fire Brigade will be called automatically.
- Leave the building by the nearest exit.
- Report to your assembly point.
- Do not stop to collect personal belongings.
- Do not use lift.

1 1435

3 1435

English, French, German

Fire action

1 1424

2 1424

FIRE ACTION SIGNS

For car parks

Fire Action

- Call Fire Brigade immediately
- Proceed to nearest available exit
- Do not return to your vehicle

1 7565

For caravan sites

In case of fire

- Operate the fire alarm by breaking the glass. The alarm will sound automatically.
- Call the Fire Brigade by telephoning 999
- Leave the building by the nearest exit.
- Report to your assembly point.

1 1422

2 1422

For caravan sites

Fire Action

- Ensure the caravan or site building involved is evacuated.
- Raise the alarm.
- Call the fire brigade. The nearest telephone is sited []
- Attack the fire using the fire fighting equipment provided.

1 1404

2 1404

For caravan sites

Fire Action

- Lift handset and dial '999'
- Give operator your telephone number and ask for Fire
- When fire brigade replies give call details.

1 1406

2 1406

Ultra Bright 2 IN 1 SIGNS



Fire action if you discover a fire

- Operate nearest fire alarm point
- Fire Brigade will be called automatically
- Leave the building by the nearest exit
- Report to your assembly point
- Do not stop to collect personal belongings
- Do not use lift

Photolum Self Adhesive 150 x 330mm 5 8221

Fire action if you discover a fire

- Operate nearest fire alarm point
- The Fire Brigade will be called automatically
- Leave the building by the nearest exit
- Report to your assembly point
- Do not stop to collect personal belongings
- Do not use lift

Photolum Self Adhesive 150 x 330mm 5 1079

Fire action if you discover a fire

- Operate nearest fire alarm point
- Call the Fire Brigade by telephoning 999
- Leave the building by the nearest exit
- Report to your assembly point
- Do not stop to collect personal belongings
- Do not use lift

Photolum Self Adhesive 150 x 330mm 5 8224

Fire action if you discover a fire

- Operate nearest fire alarm point
- Call the Fire Brigade by telephoning 999
- Leave the building by the nearest exit
- Report to your assembly point
- Do not stop to collect personal belongings
- Do not use lift

Photolum Self Adhesive 150 x 330mm 5 8225

These 2 in 1 signs are designed with an aperture to accommodate regulation size fire alarm call points, simply pop out the call point symbol and apply the main sign over the call point alarm box then position the "popped out" symbol on the wall above the alarm at a height of between 1.7 and 2 metres from the floor. Fire Action: 150 x 330mm. Call Point Symbol: 100 x 100mm

Fire action if you discover a fire

- Operate nearest fire alarm point
- The Fire Brigade will be called automatically
- Leave the building by the nearest exit
- Report to your assembly point
- Do not stop to collect personal belongings
- Do not use lift

Photolum Self Adhesive 150 x 330mm 5 8220

Fire alarm

Fire Action

- Any person discovering a fire
- Press the alarm
- Leave the building by the nearest exit
- Report to assembly point

Photolum Self Adhesive 150 x 330mm 5 8223

Fire alarm

Fire Action

- Any person discovering a fire
- Press the alarm
- Leave the building by the nearest exit
- Report to assembly point

Photolum Self Adhesive 150 x 330mm 5 8222

FIRE ACTION SIGNS

Contact Fire Service | Fight Fire if Safe and Trained

Staff Fire Action Routine

Operate nearest fire alarm point

Call the Fire Brigade

Fight the fire, if safe and trained to do so

Evacuate the building via the nearest exit

Do not stop to collect personal belongings

Staff Fire Action Routine

Operate nearest fire alarm point

Call the Fire Brigade

Fight the fire, if safe and trained to do so

Evacuate the building via the nearest exit

Do not stop to collect personal belongings

1 1439 UltraBright
 2 1439
 8 1439

Contact Fire Service | Lift in Building | Input Address & Assembly Point Details

Fire Action

If you discover a fire:

- Immediately operate nearest alarm call point.
- Attack the fire, if possible, with the equipment provided but without using personal risks.

On hearing alarm of fire:

- The [Name] will call the fire brigade.
- Proceed to the assembly point.
- Use nearest available exit.

Do not return to the building until advised to do so.

Fire Action

If you discover a fire:

- Immediately operate nearest alarm call point.
- Attack the fire, if possible, with the equipment provided but without using personal risks.

On hearing alarm of fire:

- The [Name] will call the fire brigade.
- Proceed to the assembly point.
- Use nearest available exit.

Do not return to the building until advised to do so.

1 1402 UltraBright
 2 1402
 8 1402

Contact Fire Service | Input Address, Assembly Point & Evacuation Manager Details

Fire Action

If you discover a fire:

- Immediately operate nearest alarm call point.
- Attack the fire, if possible, with the equipment provided but without using personal risks.

On hearing alarm of fire:

- The [Name] will call the fire brigade.
- Proceed to the assembly point.
- Use nearest available exit.

Do not return to the building until advised to do so.

Fire Action

If you discover a fire:

- Immediately operate nearest alarm call point.
- Attack the fire, if possible, with the equipment provided but without using personal risks.

On hearing alarm of fire:

- The [Name] will call the fire brigade.
- Proceed to the assembly point.
- Use nearest available exit.

Do not return to the building until advised to do so.

1 1401 UltraBright
 2 1401
 8 1401

OTHER EMERGENCY ACTION SIGNS

Gas Leak Action

Any person discovering a gas leak:

- Extinguish all naked flames and cigarettes.
- Turn off the supply at the control valve.
- Open all windows.
- Call gas emergency on [Number].

If the escape permits:

- Evacuate building immediately.
- Report to the external assembly point.

Do not search with naked lights.

Do not operate any electrical switch, light or appliance.

Do not turn gas back on until the escape has been reported.

Gas Leak Action

Any person discovering a gas leak:

- Extinguish all naked flames and cigarettes.
- Turn off the supply at the control valve.
- Open all windows.
- Call gas emergency on [Number].

If the escape permits:

- Evacuate building immediately.
- Report to the external assembly point.

Do not search with naked lights.

Do not operate any electrical switch, light or appliance.

Do not turn gas back on until the escape has been reported.

1 1431 UltraBright
 2 1431

HMO: Stay Put Policy | Break Glass | Contact Fire Service Lift in Building

Fire Action

If fire breaks out in your flat:

- Leave the room where the fire is straight away, then close the door.
- Use the fire escape to get out if you have to.
- Close the fire door behind you.
- Use the fire escape to get out if you have to.

If you see or hear of a fire in another part of the building:

- Use the fire escape to get out if you have to.
- Use the fire escape to get out if you have to.
- Use the fire escape to get out if you have to.

Do not take risks.

Fire Action

If fire breaks out in your flat:

- Leave the room where the fire is straight away, then close the door.
- Use the fire escape to get out if you have to.
- Close the fire door behind you.
- Use the fire escape to get out if you have to.

If you see or hear of a fire in another part of the building:

- Use the fire escape to get out if you have to.
- Use the fire escape to get out if you have to.
- Use the fire escape to get out if you have to.

Do not take risks.

1 1438 UltraBright
 2 1438
 8 1438

Contact Fire Service | Input Escape Route & Assembly Point Details

Fire alarm

Fire Action

Any person discovering a fire:

- Sound the alarm.
- Attack the fire if possible using the equipment provided.

On hearing the fire alarm:

- Leave the building by [Route].
- Close all doors behind you.
- Report to assembly point.

Do not take risks.

Fire alarm

Fire Action

Any person discovering a fire:

- Sound the alarm.
- Attack the fire if possible using the equipment provided.

On hearing the fire alarm:

- Leave the building by [Route].
- Close all doors behind you.
- Report to assembly point.

Do not take risks.

1 1427 UltraBright
 2 1427
 8 1427

Contact Fire Service | Lift in Building | Input Escape Route & Assembly Point Details

Fire alarm

Fire Action

Any person discovering a fire:

- Sound the alarm.
- Attack the fire if possible using the equipment provided.

On hearing the fire alarm:

- Leave the building by [Route].
- Close all doors behind you.
- Report to assembly point.

Do not take risks.

Fire alarm

Fire Action

Any person discovering a fire:

- Sound the alarm.
- Attack the fire if possible using the equipment provided.

On hearing the fire alarm:

- Leave the building by [Route].
- Close all doors behind you.
- Report to assembly point.

Do not take risks.

1 1426 UltraBright
 2 1426
 8 1426

Refuge action

In the event of fire:

This refuge provides fire and smoke protection for approximately [Time] minutes.

The evacuation plan in operation within these premises ensures that assistance will arrive at this point within [Time] minutes.

You are located on [Building] [Floor].

Disabled persons should:

- Remain calm.
- Wait here until assistance arrives.

Do not attempt to leave the building unassisted.

Do not leave this point even temporarily.

Refuge action

In the event of fire:

This refuge provides fire and smoke protection for approximately [Time] minutes.

The evacuation plan in operation within these premises ensures that assistance will arrive at this point within [Time] minutes.

You are located on [Building] [Floor].

Disabled persons should:

- Remain calm.
- Wait here until assistance arrives.

Do not attempt to leave the building unassisted.

Do not leave this point even temporarily.

1 1430 UltraBright
 2 1430

HMO: Break Glass | Contact Fire Service | Input Assembly Point Details

Fire Action

If a fire breaks out in your accommodation:

- Leave the room where the fire is straight away, then close the door.
- Use the fire escape to get out if you have to.
- Close the fire door behind you.
- Use the fire escape to get out if you have to.

If you see or hear of a fire in another part of the building:

- Use the fire escape to get out if you have to.
- Use the fire escape to get out if you have to.
- Use the fire escape to get out if you have to.

Do not take risks.

Fire Action

If a fire breaks out in your accommodation:

- Leave the room where the fire is straight away, then close the door.
- Use the fire escape to get out if you have to.
- Close the fire door behind you.
- Use the fire escape to get out if you have to.

If you see or hear of a fire in another part of the building:

- Use the fire escape to get out if you have to.
- Use the fire escape to get out if you have to.
- Use the fire escape to get out if you have to.

Do not take risks.

1 1414 UltraBright
 2 1414
 8 1414

Care Homes: Contact Fire Service | Input Assembly Point Details

Fire Action

The person discovering a fire will:

- Operate the nearest fire alarm.
- Attack the fire if possible using the equipment provided.

On hearing the fire alarm:

- Leave the building by [Route].
- Close all doors behind you.
- Report to assembly point.

Do not take risks.

Fire Action

The person discovering a fire will:

- Operate the nearest fire alarm.
- Attack the fire if possible using the equipment provided.

On hearing the fire alarm:

- Leave the building by [Route].
- Close all doors behind you.
- Report to assembly point.

Do not take risks.

1 1416 UltraBright
 2 1416

HMO: Contact Fire Service | Lift in Building | Input Assembly Point Details

Fire action

If you discover a fire:

- Operate the nearest alarm call point.
- Attack the fire, if possible, with the equipment provided but without using personal risks.

On hearing alarm of fire:

- The [Name] will call the fire brigade.
- Proceed to the assembly point.
- Use nearest available exit.

Do not return to the building until advised to do so.

Fire action

If you discover a fire:

- Operate the nearest alarm call point.
- Attack the fire, if possible, with the equipment provided but without using personal risks.

On hearing alarm of fire:

- The [Name] will call the fire brigade.
- Proceed to the assembly point.
- Use nearest available exit.

Do not return to the building until advised to do so.

1 1418 UltraBright
 2 1418

Contact Fire Service | Lift in Building | Input Assembly Point Details

Fire Action

If you discover fire:

- Immediately operate nearest alarm call point.
- Attack the fire, if possible, with the equipment provided but without using personal risks.

On hearing alarm of fire:

- The [Name] will call the fire brigade.
- Proceed to the assembly point.
- Use nearest available exit.

Do not return to the building until you are told it is safe to do so.

Fire Action

If you discover fire:

- Immediately operate nearest alarm call point.
- Attack the fire, if possible, with the equipment provided but without using personal risks.

On hearing alarm of fire:

- The [Name] will call the fire brigade.
- Proceed to the assembly point.
- Use nearest available exit.

Do not return to the building until you are told it is safe to do so.

1 1403 UltraBright
 2 1403
 8 1403



Ultra Bright

*Exceeds PSPA
Class C ratings*

SEE PAGE 17 FOR MORE INFORMATION

FIRE DOOR SIGNS

Fire doors are crucial in preventing the spread of fire and smoke in buildings. All fire exit doors must carry a 'Fire door, keep shut' sign. This is an example of a 'mandatory' notice, which gives an instruction and must be followed for the building to be safe from fire. Depending on the type of exits you have, you may also need to provide instructions on how to operate the door, or indicate that it opens automatically.

The Fire Safety Act 2021 clarified that flat entrance doors must be considered in the Fire Risk Assessment (FRA) mandated by the Fire Safety Order (FSO). The Fire Safety (England) Regulations 2022 require regular checks to ensure that self-closing devices are working and the fire doors, including flat entrance doors, are in efficient working order and in good repair.

FIRE DOOR SIGNS



1 1610 **B U**
2 1610 **B U**
7 1610 **B**
8 1610 **B**



3 1610 **B** Ultra Bright
4 1610 **B**



Anodised Aluminium
70 x 70mm
5 9075



Self Adhesive Vinyl
6 x 65mm Dia
5 1637



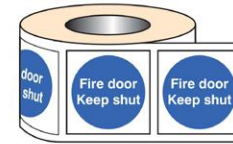
Photoluminescent Self Adhesive Vinyl
6 x 80mm Square
5 9690

Ultra Bright



ROLL OF LABELS

Roll of 100 Labels
Self Adhesive Vinyl
100 x 100mm
5 9703



FACE ADHESIVE WINDOW STICKERS

Apply this range of signs to the inside of a door window so that employees / members of the public looking in can identify that the door in question is a fire door.



100 x 100mm
5 9246



100 x 100mm
5 9247



100 x 100mm
5 9248



1 1618 **B U**
2 1618 **B U**
7 1618 **B**
8 1618 **B**



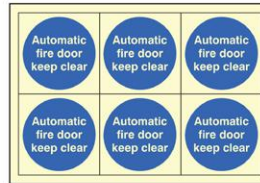
3 1618 **B** Ultra Bright
4 1618 **B**



Anodised Aluminium
70 x 70mm
5 9099

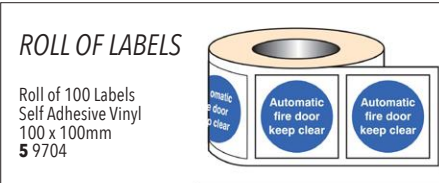


Self Adhesive Vinyl
6 x 65mm Dia
5 1681



Photoluminescent Self Adhesive Vinyl
6 x 80mm Square
5 9693

Ultra Bright



ROLL OF LABELS

Roll of 100 Labels
Self Adhesive Vinyl
100 x 100mm
5 9704



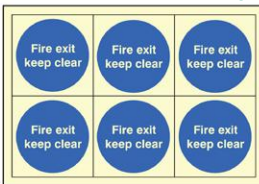
1 1606 **B F N**
2 1606 **B F N**
7 1606 **F**
8 1606 **B**



3 1606 **B F** Ultra Bright
4 1606 **B F**



Self Adhesive Vinyl
6 x 65mm Dia
5 1679



Photoluminescent Self Adhesive Vinyl
6 x 80mm Square
5 9691

Ultra Bright



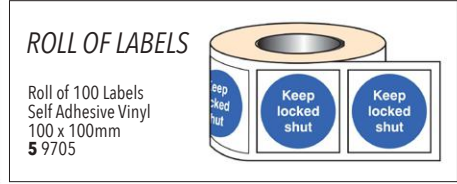
1 1609 **B**
2 1609 **B**
8 1609 **B**



Anodised Aluminium
70 x 70mm
5 9097

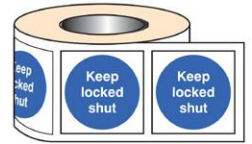


Self Adhesive Vinyl
6 x 65mm Dia
5 1660



ROLL OF LABELS

Roll of 100 Labels
Self Adhesive Vinyl
100 x 100mm
5 9705



1 1616 **B**
2 1616 **B**
8 1616 **B**



3 1616 **B** Ultra Bright
4 1616 **B**



Self Adhesive Vinyl
6 x 65mm Dia
5 1680



Photoluminescent Self Adhesive Vinyl
6 x 80mm Square
5 9692

Ultra Bright



1 1605 **F N U**
2 1605 **F N U**
7 1605 **B F**
8 1605 **B F**



3 1605 **B** Ultra Bright
4 1605 **B**



1 1635 **U**
2 1635 **U**
7 1635 **B**
8 1635 **U**



3 1635 **B** Ultra Bright
4 1635 **B**



1 1054 **B**
2 1054 **B**

FIRE DOOR SIGNS



1 1608 **B F**
2 1608 **B F**



3 1608 **B** Ultra Bright
4 1608 **B**



1 1612 **B**
2 1612 **B**



1 1602 **B F**
2 1602 **B F**



1 1619 **B**
2 1619 **B**
7 1619 **B**



1 1617 **B U**
2 1617 **B U**



1 1611 **B**
2 1611 **B**



3 1611 **B** Ultra Bright
4 1611 **B**



1 1636 **U**
2 1636 **U**



1 1604 **F N**
2 1604 **F N**



1 1614 **F**
2 1614 **F**



1 1625 **B**
2 1625 **B**



1 1621 **B**
2 1621 **B**
8 1621 **B**



3 1621 **B** Ultra Bright
4 1621 **B**



1 1626 **B D**
2 1626 **B D**



1 1628 **B**
2 1628 **B**



1 1629 **B D**
2 1629 **B D**



1 1630 **B**
2 1630 **B**

FIRE DOOR INSPECTION RECORD

It is recommended that fire doors in flats be routinely checked at least every three months to ensure they are in good working order.

Place this next to fire doors and update throughout the year.

1 1108 **K** | Adapt-a-Sign
2 1108 **K** | 215 x 310mm
5 1108

Fire Door Inspection Record		
Date	Inspected by	Comments
Jan		
Feb		
Mar		
Apr		
May		
Jun		
Jul		
Aug		
Sep		
Oct		
Nov		
Dec		

FIRE DOOR EDGE SIGNS

Do not place over the fire door's intumescent strip.



Self Adhesive Vinyl
45 x 400mm



5 1638



5 1642



5 1643

DELUXE FIRE DOOR SIGNS

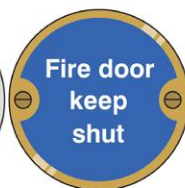
These deluxe fire door signs are ideal for environments requiring high quality finishes. All our deluxe fire door signs are ready to install and come pre-drilled with fixings.



Aluminium
76mm Dia
5 9128



Brass
76mm Dia
5 9122



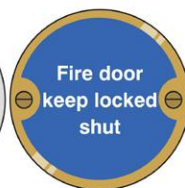
Stainless Steel
76mm Dia
5 9125



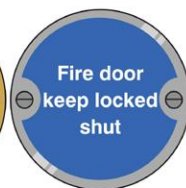
Aluminium
76mm Dia
5 9129



Brass
76mm Dia
5 9123



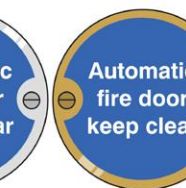
Stainless Steel
76mm Dia
5 9126



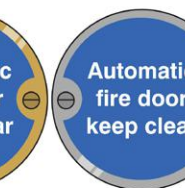
Aluminium
76mm Dia
5 9130



Brass
76mm Dia
5 9124



Stainless Steel
76mm Dia
5 9127



FIRE ESCAPE ROUTE SIGNS



1 1623 **BF**
2 1623 **BF**



1 1613 **FN**
2 1613 **FN**



1 1601 **F**
2 1601 **F**



1 1213 **EH**
2 1213 **EH**
8 1213 **E**



3 1213 **E** Ultra Bright
4 1213 **E**



1 1220 **EH**
2 1220 **EH**
8 1220 **E**



3 1220 **E** Ultra Bright
4 1220 **E**



1 1248 **EH**
2 1248 **EH**
8 1248 **E**



3 1248 **EH** Ultra Bright
4 1248 **EH**



1 1631 **FN**
2 1631 **FN**



1 1633 **FN**



1 1649 **FN**
2 1649 **FN**



1 1634 **F**
2 1634 **F**



1 1607 **F**
2 1607 **F**



1 1632 **FN**
2 1632 **FN**

FIRE LOG BOOK HOLDER

This wall mountable station ensures that fire log books are clearly visible and easy to access by fire engineers needing to view service history. The station helps to overcome the log book being misplaced and ensures it is close to hand at all times. The station is pre-drilled for easy mounting and includes a printed "missing" message to show if / when the log book has been removed.



Log book sold separately.

3mm Rigid Plastic
360 x 220 x 15mm
5 8203

FIRE LOG BOOK

Maintaining a fire log book demonstrates that fire safety responsibilities are being managed within the workplace. It also provides fire engineers with dates and times of service history and ensures compliance with BS 5839-1: 2017.



Includes contents / logs for:
User responsibilities
Premises details
Fire fighting equipment
Hose reels
Fire alarm testing
Alarm activations
Fire alarm servicing
Fire alarm system certification
Emergency lighting
Fire doors and escape route inspection
Fire instructions and drills

5 8061



210 x 297mm
Rigid Plastic
5 8362
Self Adhesive Vinyl
5 8363



210 x 297mm
Rigid Plastic
5 8396
Self Adhesive Vinyl
5 8397

GLOW STICKS



Comes with suspension cord for around the neck. Glows for approximately 12 hours. 150mm Long

Green 5 8586
Red 5 8587
Blue 5 8588

FIRE DOCUMENT HOLDER

Keep important fire safety documents clearly displayed and readily available in a central location.

This sign comes with a durable polystyrene document holder for storing A4 ring binders and folders.

440 x 600mm
10mm Foam Board
5 8213



FIRE SAFETY SIGNS KIT

Our most popular fire safety signs in a cost effective kit. Ideal for new builds or a freshen up.

Rigid Plastic

- 2 x Fire alarm (300 x 100mm)
- 3 x Fire exit - Left (300 x 100mm)
- 3 x Fire exit - Right (300 x 100mm)
- 3 x EEC Fire action (150 x 200mm)
- 3 x Fire extinguisher (300 x 100mm)
- 2 x Push bar to open (300 x 100mm)
- 1 x Fire assembly point (450 x 600mm)
- 2 x Your assembly point is (150 x 50mm)
- 2 x Fire exit - Straight on (300 x 100mm)
- 2 x Fire exit - Keep clear (300 x 100mm)

Self Adhesive Vinyl

18 x Fire door keep closed (65mm Dia)

5 1724



Ultra Bright

*Razor sharp
blackout definition*

SEE PAGE 17 FOR MORE INFORMATION

FLOOR, STAIRWELL & DWELLING SIGNS

This range of emergency escape signs helps assist the fire and rescue service in identifying each level, stairway and flat location.

Stairways within the building should be identified by the use of the stairway ID signs, positioned on each level of the building. Floor level identification signs enable identification of each floor by “floor number” and should be located on every landing of a fire-fighting stairway (below the stairway identification sign) and every fire-fighting lobby or open access balcony.

Floor level ID signs should be supplemented by flat ID signs (positioned directly below the storey ID signs), which provide information as to the dwellings (flats or maisonettes) located on the storey in question.

STAIRWAY ID SIGNS

To assist the fire and rescue service in identifying each level of a building, storey identification signs identify the level by "Floor Number" and should be located on every landing of a fire-fighting stairway and every fire-fighting lobby (or open access balcony) into which a fire-fighting lift discharges. Storey ID signs should be supplemented by dwelling indicator signs (positioned directly below the Storey ID sign), which provide information as to the dwellings (flats or maisonettes) located on the storey in question.



3 2177 Ultra Bright
4 2177



3 2178 Ultra Bright
4 2178



3 2179 Ultra Bright
4 2179



3 2180 Ultra Bright
4 2180

FLOOR LEVEL ID SIGNS



3 2170 Ultra Bright
4 2170



3 2171 Ultra Bright
4 2171



3 2172 Ultra Bright
4 2172



3 2173 Ultra Bright
4 2173



3 2174 Ultra Bright
4 2174

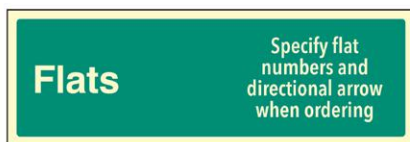


3 2175 Ultra Bright
4 2175



3 2176 Ultra Bright
4 2176

FLAT / DWELLING ID SIGNS

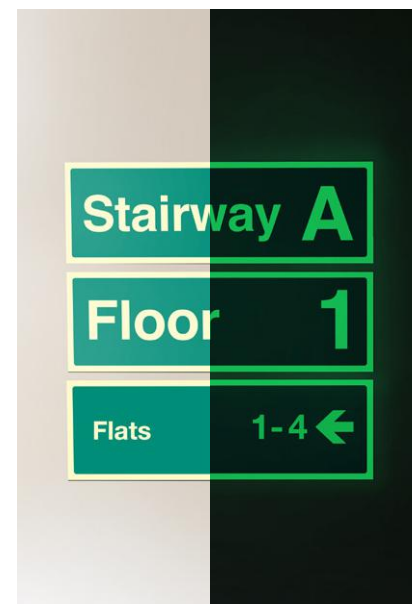


Rigid Plastic
Photoluminescent
450 x 150mm
5 2181

Self Adhesive
Photoluminescent
450 x 150mm
5 2182

Ultra Bright

E.G.



Ultra Bright

Razor sharp blackout definition

SEE PAGE 17 FOR MORE INFORMATION



RESPONSIBLE PERSONS & FIRE RESCUE

In residential buildings with two or more domestic premises (e.g. blocks of flats) the responsible person must provide residents with information on the risks from fire within their building and the fire safety measures provided to keep them safe. This requirement expands upon legislation introduced in January 2023 that required responsible persons to provide residents with information on emergency procedures and the importance of fire doors.

RESPONSIBLE PERSONS & FIRE RESCUE SIGNAGE

Control equipment for the Evacuation Alert System (EAS) should be prominently sited, within a secure enclosure, on the normal fire and rescue service entrance level, at a location close to the normal fire and rescue service entrance. A suitable Evacuation Alert Control & Indicating Equipment (EACIE) or Premises Information Box (PIB) sign should be fixed to the door of the cabinet.



1 1110 **F**
2 1110 **F**
6 1110 **F**



3 1110 **F** Ultra Bright
4 1110 **F**



1 1109 **F**
2 1109 **F**
6 1109 **F**



3 1109 **F** Ultra Bright
4 1109 **F**



1 1020 **C**



1 1041 **B**
2 1041 **B**

FIRE ALARM TABLE TOP SIGN

Ideal for reception areas to ensure visitors / staff are aware of scheduled fire alarms.

Simply write the time of the fire alarm test and display when required.

3mm Acrylic
Face: 300 x 210mm
5 8062



1 1111 **G**
2 1111 **G**



3 1111 **G** Ultra Bright
4 1111 **G**



1 1040 **G L**

REFLECTIVE ARMBANDS

Enable staff and visitors to quickly identify fire personnel. The adjustable hook and look fastening ensures one size fits all. Adjustable to fit 90-130mm dia.

Fire Warden 5 6448
Fire Marshal 5 6449



1 1112 **H** Adapt-a-Sign
2 1112 **H** 215 x 310mm
5 1112



1 1062 **E**
2 1062 **E**



1 1064 **H**
2 1064 **H**



1 1065 **H**
2 1065 **H**



1 1037 **E** Adapt-a-Sign
2 1037 **E** 310 x 215mm
5 1037



1 1036 **E**
2 1036 **E**



Adapt-a-Sign
215 x 310mm
5 1059



1 1035 **E** Adapt-a-Sign
2 1035 **E** 215 x 310mm
5 1035



1 1052 **H** Adapt-a-Sign
2 1052 **H** 215 x 310mm
5 1052



1 1053 **H** Adapt-a-Sign
2 1053 **H** 215 x 310mm
5 1053



1 1060 **E**
2 1060 **E**



1 1063 **E**
2 1063 **E**

MATERIAL INFORMATION

The first digit you see on our product codes identifies the material the sign is made from, an overview of which can be found in this section. Deciding on your sign message is only the first step. When ordering a sign, consideration should be given to where it is going to be displayed. Our guide below will help you to decide which material is best for your location and covers our most popular sign materials – this list is not exhaustive so if you can't see the material you require please contact our sales team and we will be happy to quote in a material of your choice.

RIGID PLASTIC

CODE: **1**

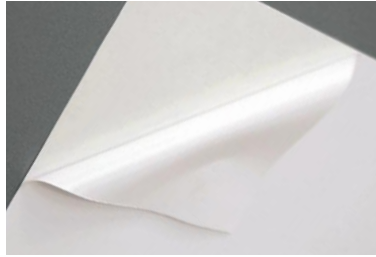
A lightweight material with high impact strength, suitable for indoor and outdoor use. Easily drilled, white, glossy.



SELF ADHESIVE VINYL

CODE: **2**

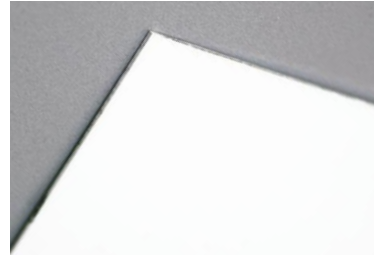
High gloss, flexible PVC with self adhesive backing. Suitable for most smooth, dry and clean surfaces.



ALUMINIUM

CODE: **6**

Aluminium with gloss white powder coating. Ideal for both indoor and outdoor. Excellent weathering & UV resistance. A long-life product.



PET

CODE: **7**

2mm Thermoplastic Polyester (known as PET) is high quality, recyclable, impact, fire and vandal resistant making it ideal for harsher environments.



QUICK FIX

CODE: **8**

A rigid plastic surface provides a durable finish, whilst a strong self adhesive backing removes the need for drilling, screws or additional fixings.



MISCELLANEOUS MATERIALS

CODE: **5**

Any product outside of our standard choice of material or size ranges begins with a 5. This may include items such as rolls of tape, sign frames, banners, or any sign requiring bespoke designs. It may include products using (but not limited to) the following materials:



PVC BANNER

Flame resistant, 440gsm PVC banner for indoor and outdoor applications. Digitally printed for eye catching displays.



FLUTED POLYPROPYLENE (4MM)

Lightweight, waterproof, strong and 100% recyclable (Class PP5) making it ideal for temporary signage such as site safety signs.



FOAM PVC (5MM)

Available in 3mm, 5mm or 10mm. Bright white, lightweight & waterproof. Easily drilled for fixing. Ideal for outdoor site safety boards.



ALUMINIUM COMPOSITE

3mm white aluminium skin with a polyethylene core. Lightweight and weather resistant. Ideal for outdoor signs due to its non-existent scrap value.



REFLECTIVE

Available on various materials with a choice of reflective finishes. RA1 for temporary traffic signs or R2 for permanent traffic signs.

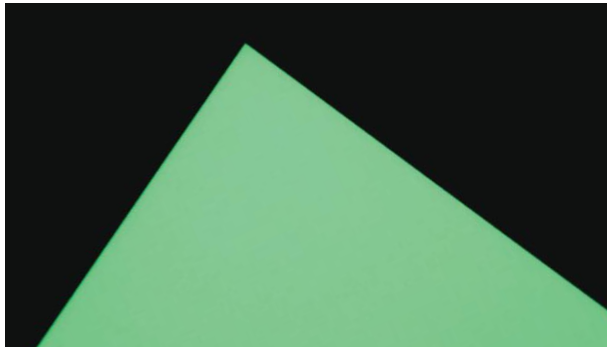
MATERIAL INFORMATION

The strength and quality of photoluminescent can vary greatly between manufacturers and for this reason we have introduced the Ultra Bright brand to give assurance that all our photoluminescent signage exceeds PSPA (The Photoluminescent Safety Products Association) Class C ratings, making it one of the best in the UK market and ensuring our signs stay brighter for longer to give the maximum chance for a successful evacuation.

PHOTOLUMINESCENT RIGID PLASTIC

CODE: **3**

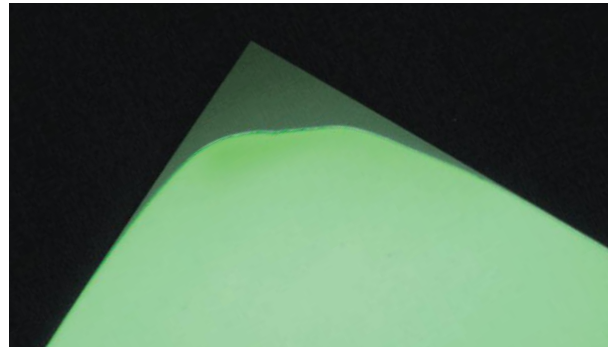
An off-white rigid plastic with photoluminescent pigmentation which enables it to glow in the dark. After glow properties exceed PSPA 'Class C' standards. The luminance properties and performance has been tested to DIN 67510.



PHOTOLUMINESCENT SELF ADHESIVE VINYL

CODE: **4**

An off-white flexible self adhesive plastic with photoluminescent pigmentation which enables it to glow in the dark. After glow properties exceed PSPA 'Class C' standards. The luminance properties and performance has been tested to DIN 67510.



Photoluminescent signage is charged by light which allows it to glow in the dark if there is a sudden loss of light due to a power outage or if thick smoke from a fire is obstructing vision. Using UltraBright signage in a building will ensure that they are clearly visible in blackout conditions which can prove the difference between life and death during an emergency evacuation. The real beauty of UltraBright signs is that they do not need electricity to glow in the dark if properly sited and maintained.

All Safety Way Guidance Systems (SWGS) must conform to the standards set out in BS ISO 16069. This stipulates requirements that need to be met with regard to the design, installation and performance for photoluminescent Safety Way Guidance Systems. The benefit of these systems is that they are coherent and understood by all, regardless of culture or language. This is ensured as symbols on the signs must be compliant with BS EN 7010 and sign design must meet the requirements of BS ISO 3864 parts 1- 4, to conform to BS ISO 16069.

To achieve high performance in low light conditions and conform to ISO 16069 we recommend using **Ultra Bright**

MATERIAL CODES

- 1** Rigid Plastic
- 2** Self Adhesive Vinyl
- 3** UltraBright Rigid Plastic
- 4** UltraBright Self Adhesive
- 5** Miscellaneous
- 6** Aluminium
- 7** PET
- 8** Quick Fix

LANDSCAPE SIZES

- A** 100 x 75mm
- B** 80 x 80mm
- C** 150 x 150mm
- D** 150 x 100mm
- E** 200 x 150mm
- F** 200 x 200mm
- G** 300 x 100mm
- H** 300 x 250mm
- J** 400 x 200mm
- K** 400 x 300mm
- L** 450 x 150mm
- M** 600 x 200mm
- N** 400 x 400mm
- P** 600 x 400mm
- Q** 600 x 450mm
- S** 200 x 75mm

PORTRAIT SIZES

- A** 75 x 100mm
- B** 80 x 80mm
- C** 150 x 150mm
- D** 100 x 150mm
- E** 150 x 200mm
- F** 200 x 200mm
- G** 100 x 300mm
- H** 250 x 300mm
- J** 200 x 400mm
- K** 300 x 400mm
- L** 150 x 450mm
- M** 200 x 600mm
- N** 400 x 400mm
- P** 400 x 600mm
- Q** 450 x 600mm
- S** 75 x 200mm
- U** 100 x 100mm
- V** 150 x 300mm
- W** 600 x 900mm
- X** 100 x 200mm

Ultra Bright SPECIFICATIONS & BENEFITS

- 1.** Exceeds Class C photoluminescent PSPA rating
- 2.** Afterglow testing in accordance with DIN 67510-Pt1
- 3.** Compliant with ISO 16069:2017 Safety way guidance systems (SWGS)
- 4.** Maximises visibility of signs during smoky / black-out conditions. Provides clear guidance to exits and emergency equipment which helps significantly reduce evacuation times
- 5.** Self re-chargeable and maintenance free - No power source / batteries required
- 6.** Instant and long lasting visibility of signage in blackout conditions. It takes over 48 hours to totally fade from fully charged
- 7.** Cost effective and easy to install
- 8.** Non-toxic or radioactive pigments (REACH / RoHS compliant)

The table below shows that **UltraBright** stays brighter for longer in comparison to PSPA ratings.

LUMINANCE MCD/M2	2MIN	10MIN	30MIN	60MIN
Class A	108	25	7	3
Class B	210	50	15	7
Class C	690	140	45	20
Ultra Bright	957	199	59	26

The classification system is calculated on luminance decay after a given time which complies to ISO 17398:2004, ISO 16069:2017 and DIN 67510-Pt1

OUR CODES EXPLAINED



- The bold number (**1 & 2**) at the start of the code represents the available materials
- The four digit number represents the sign code (4021)
- The letters represent the available sizes. Landscape are squares. Portrait are circles.



FIRE SAFETY

2023 REGULATION UPDATES

New Fire Safety (England) Regulations came into force in 2023. This document will explain the background, what fire safety professionals need to be aware of, and of the potential challenges ahead.